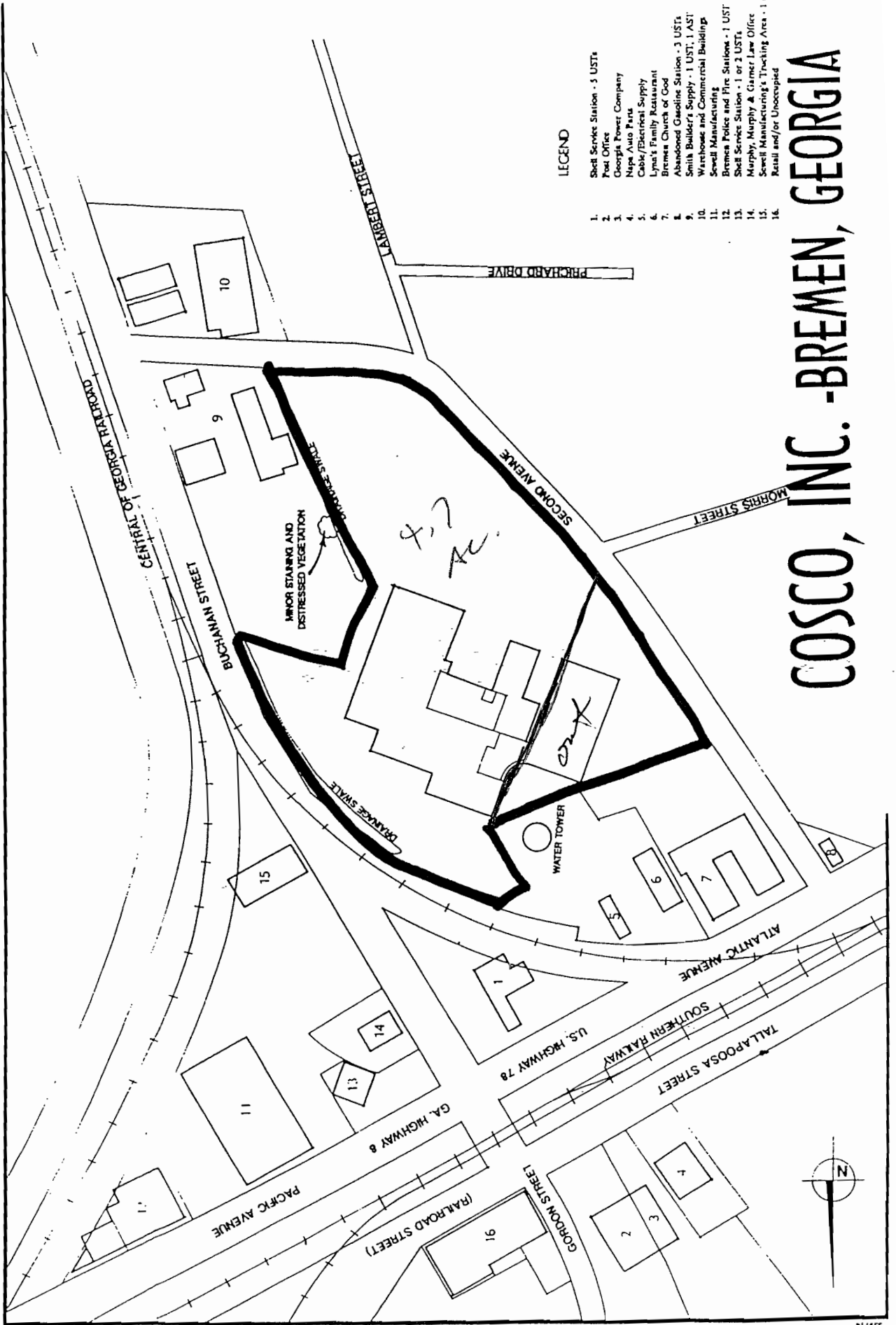


# COSCO, INC.

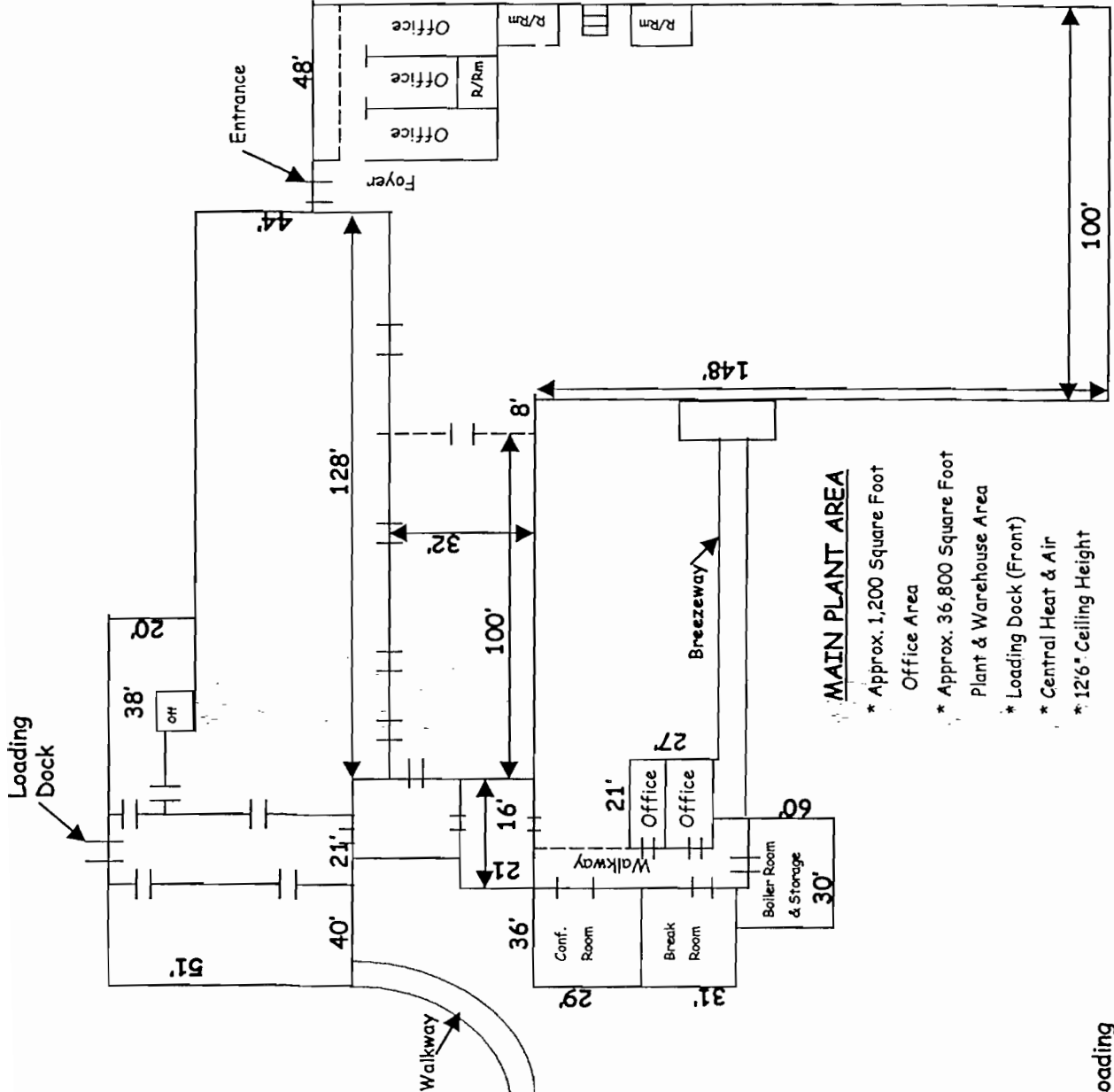
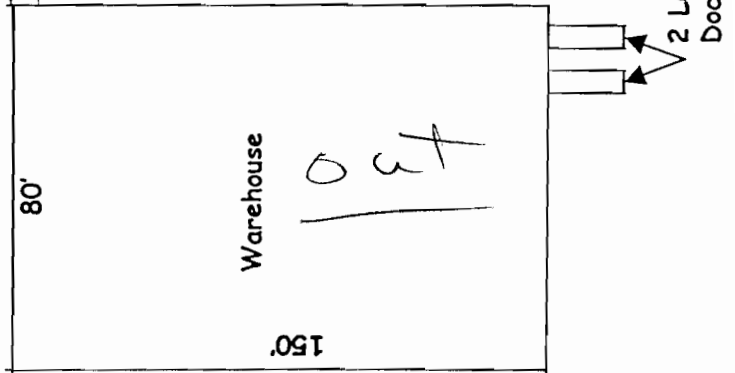
BREMEN, GEORGIA



# COSCO, INC. - BREMEN, GEORGIA

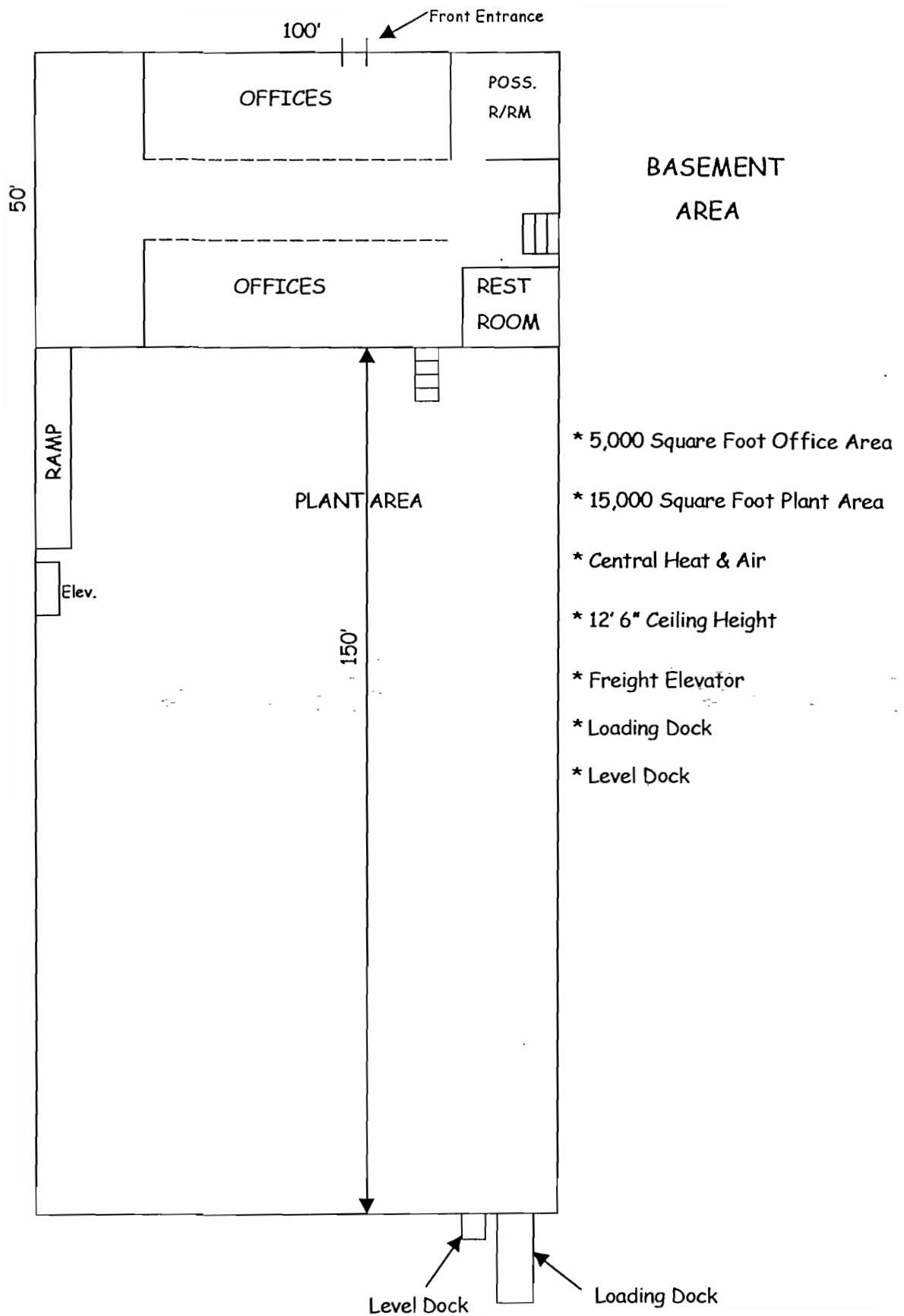
**WAREHOUSE**

- \* 12,000 Square Foot Warehouse Area
- \* 16 Foot Ceiling Height
- \* Sprinkler System
- \* Forced Air Gas Heat
- \* Roof & Side Ventilating Fans
- \* Loading Dock & Ground Level Dock
- \* Paved Parking



**MAIN PLANT AREA**

- \* Approx. 1,200 Square Foot Office Area
- \* Approx. 36,800 Square Foot Plant & Warehouse Area
- \* Loading Dock (Front)
- \* Central Heat & Air
- \* 12'6" Ceiling Height



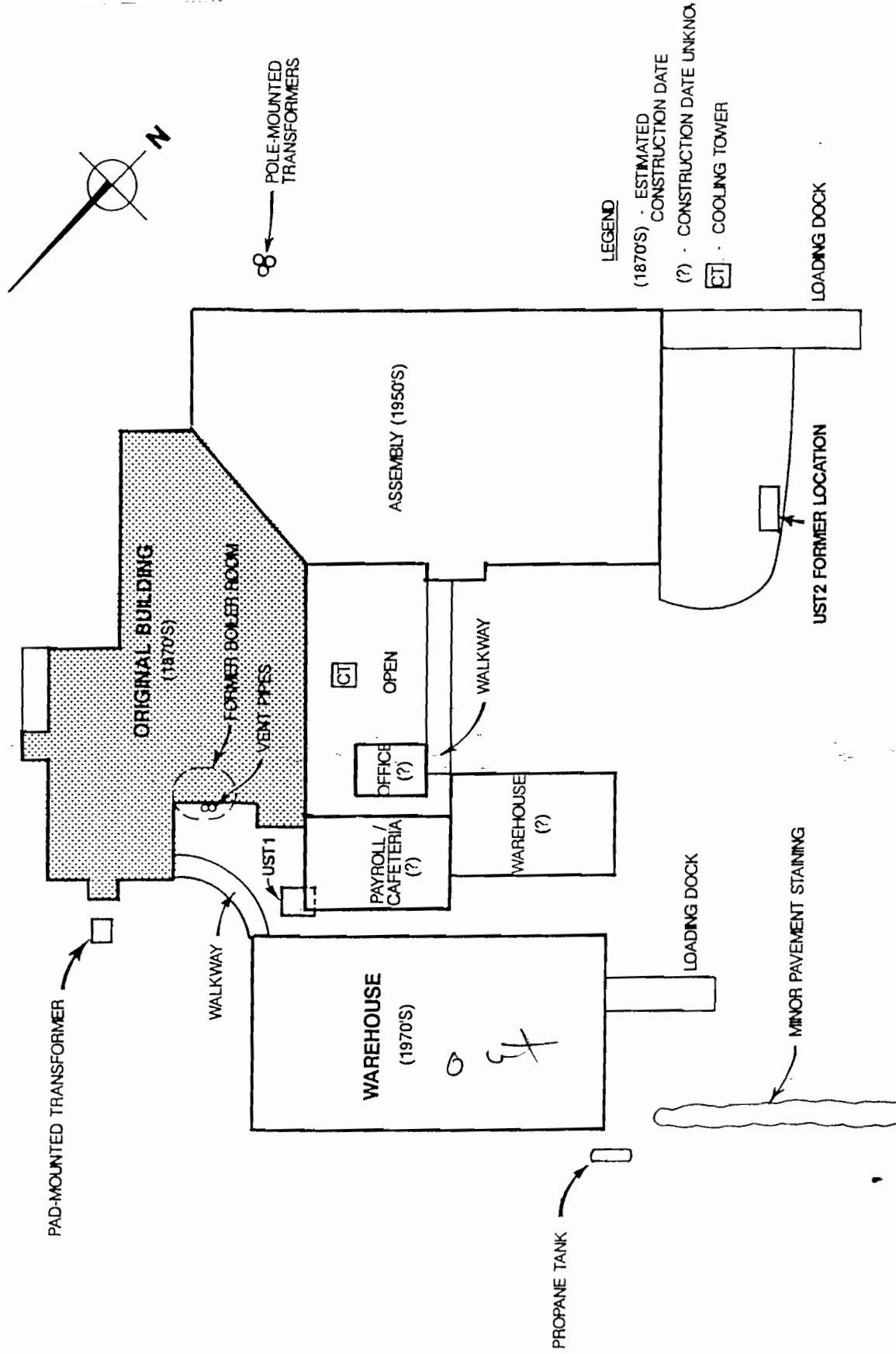
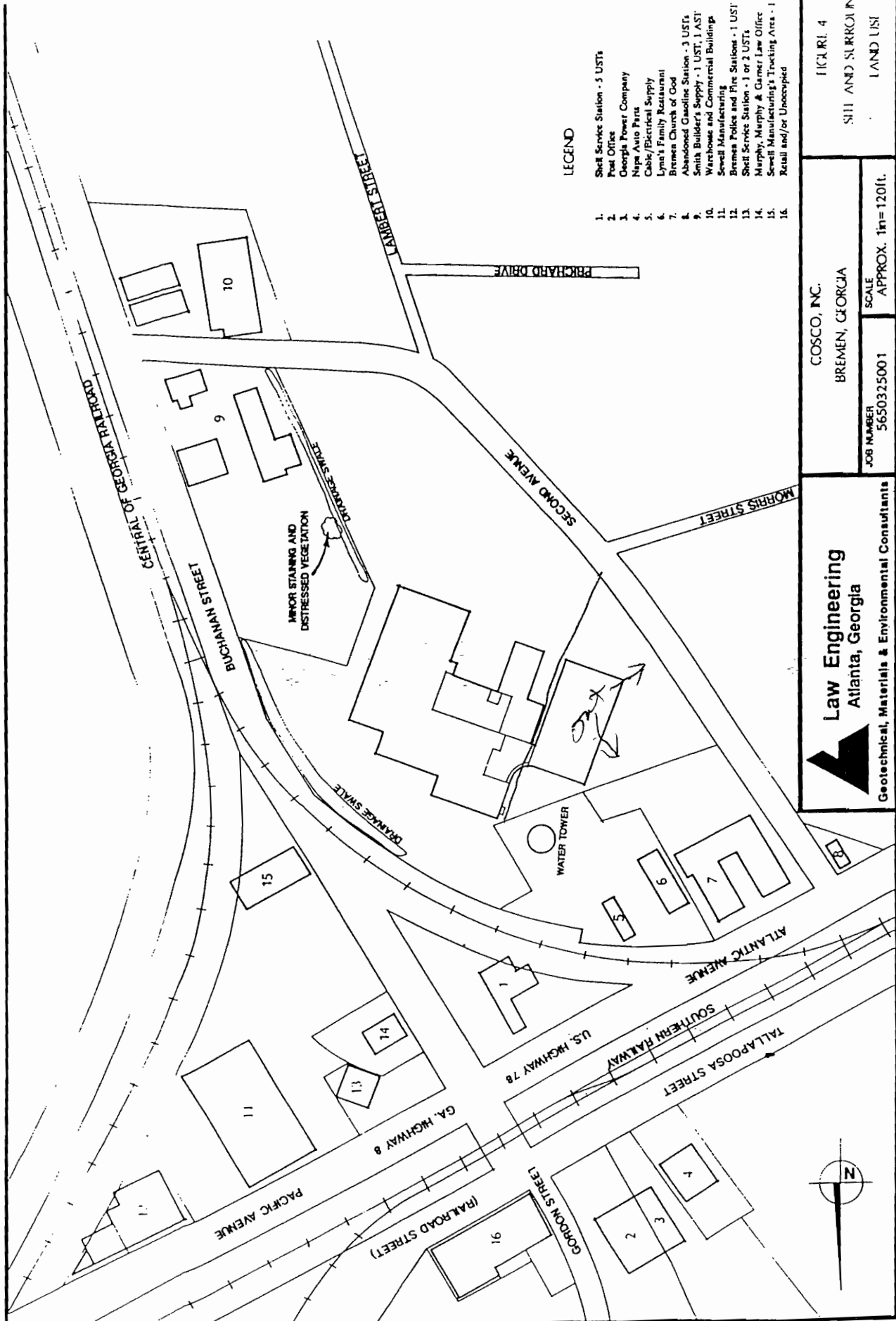


FIGURE 2 SITE PLAN

COSCO, INC. BREMEN, GEORGIA	
JOB NUMBER 5650325001	SCALE APPROX. 1in=1020ft

**Law Engineering**  
Atlanta, Georgia

Geotechnical, Materials & Environmental Consultants



**LEGEND**

1. Shell Service Station - 5 USTs
2. Post Office
3. Georgia Power Company
4. Napa Auto Parts
5. Cable/Electrical Supply
6. Lynn's Family Restaurant
7. Bremen Church of God
8. Abandoned Gasoline Station - 3 USTs
9. Smith Builder's Supply - 1 UST, 1 AST
10. Warehous and Commercial Buildings
11. Sewell Manufacturing
12. Bremen Police and Fire Station - 1 UST
13. Shell Service Station - 1 or 2 USTs
14. Murphy, Murphy & Garner Law Office
15. Sewell Manufacturing's Trucking Area - 1 or 2 USTs
16. Retail and/or Unoccupied

FIGURE 4  
SITE AND SURROUNDING  
LAND USE

COSCO, INC.  
BREMEN, GEORGIA

JOB NUMBER  
5650325001

SCALE  
APPROX. 1in=120ft.

**Law Engineering**  
Atlanta, Georgia

Geotechnical, Materials & Environmental Consultants